

| TABULKA MŇSTNOSTI - LNP |                |           |             |             |             |             |
|-------------------------|----------------|-----------|-------------|-------------|-------------|-------------|
|                         | C <sub>0</sub> | Relaxační | První řada  | 2. řada     | 3. řada     | Poslední    |
| 1                       | 1.01           | 1.01      | 12.99-13.00 | 12.99-13.00 | 12.99-13.00 | 12.99-13.00 |
| 2                       | 1.02           | 1.02      | 13.00-13.01 | 13.00-13.01 | 13.00-13.01 | 13.00-13.01 |
| 3                       | 1.03           | 1.03      | 13.01-13.02 | 13.01-13.02 | 13.01-13.02 | 13.01-13.02 |
| 4                       | 1.04           | 1.04      | 13.02-13.03 | 13.02-13.03 | 13.02-13.03 | 13.02-13.03 |
| 5                       | 1.05           | 1.05      | 13.03-13.04 | 13.03-13.04 | 13.03-13.04 | 13.03-13.04 |
| 6                       | 1.06           | 1.06      | 13.04-13.05 | 13.04-13.05 | 13.04-13.05 | 13.04-13.05 |
| 7                       | 1.07           | 1.07      | 13.05-13.06 | 13.05-13.06 | 13.05-13.06 | 13.05-13.06 |
| 8                       | 1.08           | 1.08      | 13.06-13.07 | 13.06-13.07 | 13.06-13.07 | 13.06-13.07 |
| 9                       | 1.09           | 1.09      | 13.07-13.08 | 13.07-13.08 | 13.07-13.08 | 13.07-13.08 |
| 10                      | 1.10           | 1.10      | 13.08-13.09 | 13.08-13.09 | 13.08-13.09 | 13.08-13.09 |
| 11                      | 1.11           | 1.11      | 13.09-13.10 | 13.09-13.10 | 13.09-13.10 | 13.09-13.10 |
| 12                      | 1.12           | 1.12      | 13.10-13.11 | 13.10-13.11 | 13.10-13.11 | 13.10-13.11 |
| 13                      | 1.13           | 1.13      | 13.11-13.12 | 13.11-13.12 | 13.11-13.12 | 13.11-13.12 |
| 14                      | 1.14           | 1.14      | 13.12-13.13 | 13.12-13.13 | 13.12-13.13 | 13.12-13.13 |
| 15                      | 1.15           | 1.15      | 13.13-13.14 | 13.13-13.14 | 13.13-13.14 | 13.13-13.14 |
| 16                      | 1.16           | 1.16      | 13.14-13.15 | 13.14-13.15 | 13.14-13.15 | 13.14-13.15 |
| 17                      | 1.17           | 1.17      | 13.15-13.16 | 13.15-13.16 | 13.15-13.16 | 13.15-13.16 |
| 18                      | 1.18           | 1.18      | 13.16-13.17 | 13.16-13.17 | 13.16-13.17 | 13.16-13.17 |
| 19                      | 1.19           | 1.19      | 13.17-13.18 | 13.17-13.18 | 13.17-13.18 | 13.17-13.18 |
| 20                      | 1.20           | 1.20      | 13.18-13.19 | 13.18-13.19 | 13.18-13.19 | 13.18-13.19 |
| 21                      | 1.21           | 1.21      | 13.19-13.20 | 13.19-13.20 | 13.19-13.20 | 13.19-13.20 |
| 22                      | 1.22           | 1.22      | 13.20-13.21 | 13.20-13.21 | 13.20-13.21 | 13.20-13.21 |
| 23                      | 1.23           | 1.23      | 13.21-13.22 | 13.21-13.22 | 13.21-13.22 | 13.21-13.22 |
| 24                      | 1.24           | 1.24      | 13.22-13.23 | 13.22-13.23 | 13.22-13.23 | 13.22-13.23 |
| 25                      | 1.25           | 1.25      | 13.23-13.24 | 13.23-13.24 | 13.23-13.24 | 13.23-13.24 |
| 26                      | 1.26           | 1.26      | 13.24-13.25 | 13.24-13.25 | 13.24-13.25 | 13.24-13.25 |
| 27                      | 1.27           | 1.27      | 13.25-13.26 | 13.25-13.26 | 13.25-13.26 | 13.25-13.26 |
| 28                      | 1.28           | 1.28      | 13.26-13.27 | 13.26-13.27 | 13.26-13.27 | 13.26-13.27 |
| 29                      | 1.29           | 1.29      | 13.27-13.28 | 13.27-13.28 | 13.27-13.28 | 13.27-13.28 |
| 30                      | 1.30           | 1.30      | 13.28-13.29 | 13.28-13.29 | 13.28-13.29 | 13.28-13.29 |
| 31                      | 1.31           | 1.31      | 13.29-13.30 | 13.29-13.30 | 13.29-13.30 | 13.29-13.30 |
| 32                      | 1.32           | 1.32      | 13.30-13.31 | 13.30-13.31 | 13.30-13.31 | 13.30-13.31 |
| 33                      | 1.33           | 1.33      | 13.31-13.32 | 13.31-13.32 | 13.31-13.32 | 13.31-13.32 |
| 34                      | 1.34           | 1.34      | 13.32-13.33 | 13.32-13.33 | 13.32-13.33 | 13.32-13.33 |
| 35                      | 1.35           | 1.35      | 13.33-13.34 | 13.33-13.34 | 13.33-13.34 | 13.33-13.34 |
| 36                      | 1.36           | 1.36      | 13.34-13.35 | 13.34-13.35 | 13.34-13.35 | 13.34-13.35 |
| 37                      | 1.37           | 1.37      | 13.35-13.36 | 13.35-13.36 | 13.35-13.36 | 13.35-13.36 |
| 38                      | 1.38           | 1.38      | 13.36-13.37 | 13.36-13.37 | 13.36-13.37 | 13.36-13.37 |
| 39                      | 1.39           | 1.39      | 13.37-13.38 | 13.37-13.38 | 13.37-13.38 | 13.37-13.38 |
| 40                      | 1.40           | 1.40      | 13.38-13.39 | 13.38-13.39 | 13.38-13.39 | 13.38-13.39 |
| 41                      | 1.41           | 1.41      | 13.39-13.40 | 13.39-13.40 | 13.39-13.40 | 13.39-13.40 |
| 42                      | 1.42           | 1.42      | 13.40-13.41 | 13.40-13.41 | 13.40-13.41 | 13.40-13.41 |

| ČN   | NAUT   | DOX [H] | K5 | AMP/02/16<br>[G] | AMP/02/16<br>[G] | AMP/02/16<br>[G] |
|------|--------|---------|----|------------------|------------------|------------------|
| P-01 | 95-140 | 3,350   | 2  | 1,650            |                  | 107,02           |

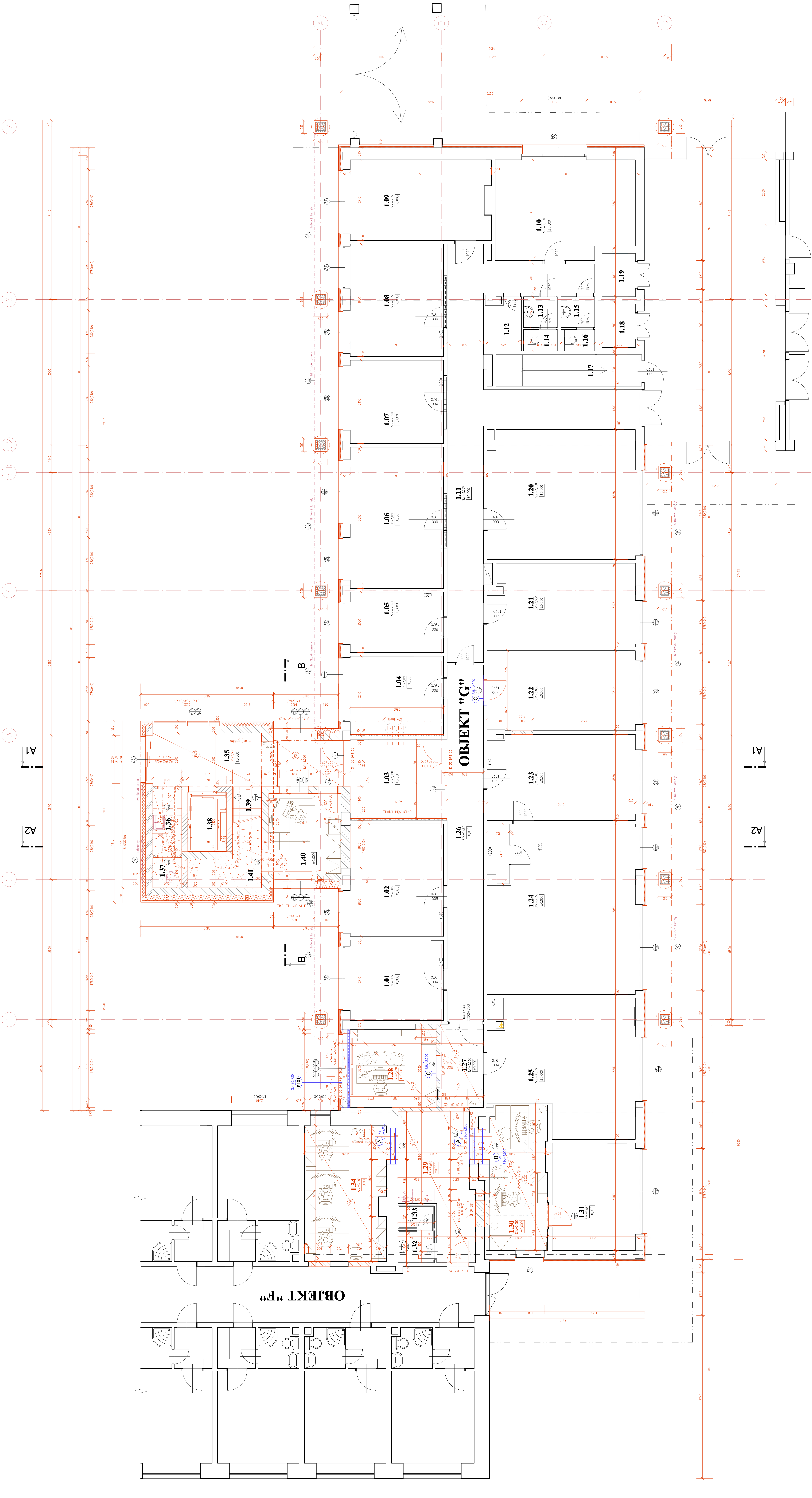
|          | keramický | překlad | HELIZ | 23,8 | 70/238/1500 | 11 |
|----------|-----------|---------|-------|------|-------------|----|
| <b>A</b> | keramický | překlad | HELIZ | 14,5 | 145/71/1500 | 3  |
| <b>B</b> | keramický | překlad | HELIZ | 14,5 | 145/71/1250 | 2  |
| <b>C</b> | keramický | překlad | HELIZ | 14,5 | 145/71/1250 | 2  |

### LEGENDA MATERIÁLŮ:

- [illegible]

**OZNÁMKY:**

- [illegible]



v průběhu stavby bude dodavatel spolupracovat na řešení kompletního detailního průzkumu a prověření konstrukcí z hlediska statiky a bezpečného užívání.

[illegible]